



# KISCO MANUFACTURING

C O R P O R A T I O N

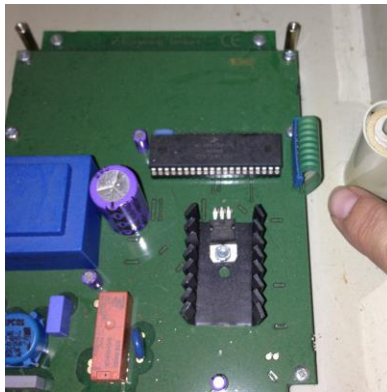
5155 ARGYLE ST, PORT ALBERNI, BC CANADA V9Y 1V3

PHONE: (604) 823-7456

## Replacing Print Card

### **DISCONNECT UNIT POWER - TURN OFF WATER**

- 1- Remove plug from Temperature knob using a small slotted screw driver
- 2- MAKE A Note of what temperature setting the temperature knob is set at. \_\_\_\_\_
- 3- Undo screw in center of temperature knob using an allen key
- 4- Gently wiggle the temperature knob until it comes off
- 5- Remove 6 small grey plugs from front plate
- 6- MAKE SURE YOUR HANDS ARE CLEAN AT THIS POINT.
- 7- Using a Phillips screwdriver undo all 6 screws
- 8- Now lift front cover slowly. There are two green plugs attaching the front plate to the main body. Pull firmly on the green plug. DO NOT pull on wires.
- 9- Lay the cover on a clean surface face down.
- 10- Using a small straight blade screw driver loosen the four screw on the grey box.
- 11- Lift off grey box and set aside.
- 12- Unplug green ribbon from print card see picture.



- 13- Remove four screws holding print card in place with a Phillips screwdriver.
- 14- Remove new print card from packaging. Remove protective film from screen.
- 15- Align new print card in place and fasten using old screws.
- 16- Attach touch pad green ribbon plug from step 12.
- 17- Replace grey box and fasten screws.
- 18- Replace the green plugs making sure they are firmly attached.
- 19- Reposition the front plate onto the watermeter.
- 20- Fasten 6 screws and replace plugs.
- 21- Re- attach the temperature knob making sure that the temperature is in the same place as in step 2.
- 22- Fasten allen screw. Replace main plug.
- 23- Turn on Power
- 24- TEST